



ACROW  
Consulting  
Engineers  
PVT. (LTD)

## Introduction

Acrow Consulting Engineers is an engineering consultancy firm, that provides services for structural engineering design, engineering failure analysis, structural health assessment and strengthening of residential, commercial, industrial and transportation structures. We understand that Acrow exists in a highly competitive market, with multiple service providers. We however remain confident because of our core business principle, which is to watch over the best financial interests of our clients by delivering economical and safe engineering designs. The superior training, education and experience of our employees allows adoption of latest engineering practices and use of modern softwares for delivery of safe and economical engineering designs







# Table Of Content

Why Acrow?	04
Core Business Principle	05
Our Services	06
Meet the team	07
Building Projects	08
Transportation Structures	12
Projects in Hand	13
Design Review & Audits	14

# Why ACROW?

1 Ton of Steel Costs Rs.  
300,000.

Acrow has saved as much  
as 11 million rupees worth  
of steel per floor.

Safe, Smart & Optimized Design: Are you a developer, an EPC contractor, or a contractor working on turn key projects? If so, we can help you to significantly reduce the cost of your project by optimizing its design. Whereas value engineering (i.e. engineering design optimization) is a compulsory part of the engineering exercise, full recognition of its benefits is yet to be understood in this part of the world.

Most clients do not understand the significance of hiring the right party for structural design of projects, resulting in overly conservative structural designs and significant increase in cost of the structure. It is therefore in the interest of the client to hire a capable structural engineering firm to ensure economical and safe design of structures.

# Core Business Principle

## SAFE, SMART AND OPTIMIZED DESIGN

Create business by creating value for the clients, by using modern methods, techniques, design approaches and technology to optimize engineering design.



# Our Services

Acrow is a multi-disciplinary firm providing a range of services to its clients, hence allowing them a one-stop solution to their needs.

## Structure

We provide expertise in engineering solutions and includes in-depth capability on a range of operational, institutional and environmental aspects of infrastructure delivery.

## Architecture

We provides clients with design solutions which are practical, efficient and suitable for an ever-changing environment. Buildings are designed and constructed from conception to completion.

## Plumbing

We believe in designing efficient plumbing systems that saves water and energy resources. In order for smooth running of our system.

## Mechanical

We provide state of the art solutions to help in streamlining your project with the most efficient systems. We believe in smart solutions for efficient future.

## Electrical

We have expertise in planning and reviewing the design of electrical equipment in our spaces, including lighting equipment, power systems, power distribution, fire and life safety systems, electronic components, and voice and data communications infrastructure

## Interior

We have the expertise to design, develop and create unique interiors that meet clients' requirements both aesthetically and functionally. A well thought out design creates flexible spaces, utilizes natural light and creates a more comfortable and pleasing indoor environment.



# Meet the Team

Dr. Fawad Muzzaffar Ph.D., P.E.  
CEO

Key Qualifications:

-Ph.D. (Structures), Stanford University,  
Stanford, CA, U.S.A.

-MSc. (Structures), Stanford University,  
Stanford, CA, U.S.A;

Professional Experience: 20 Years.



Myra Ali  
Principal Architect

Key Qualifications:

-M.Phil, University of Cambridge,  
Cambridge UK

-Masters, Savannah College of Art &  
Design(SCAD), Savannah GA USA

Professional Experience: 20 Years.



COO

Key Qualifications: MSc. (Structures), U.S.A;

Professional Experience: 20 Years.

DESIGN LEAD 1

Key Qualifications: MSc. (Structures), U.S.A;

Professional Experience: 7 Years.

DESIGN LEAD 2

Key Qualifications: MSc. (Structures), UET;

Professional Experience: 7 Years.

DESIGN LEAD 3

Key Qualifications: MSc. (Structures),  
CANADA;

Professional Experience: 7 Years.

DESIGN LEAD 4

Key Qualifications: B.Arch, NCA;

Professional Experience: 6 Years.

GEO-TECHNICAL ENGINEER

Key Qualifications: MSc. (Structures), UET;

Professional Experience: 10 Years.

HEAD SUPERVISION & COSTING

Key Qualifications: MSc. (Construction  
Management),;

Professional Experience: 13 Years.

# Building Projects



## High Q Tower, Lahore

Location: 1-A Jail Road, Lahore

Covered Area = 370,000 ft<sup>2</sup>

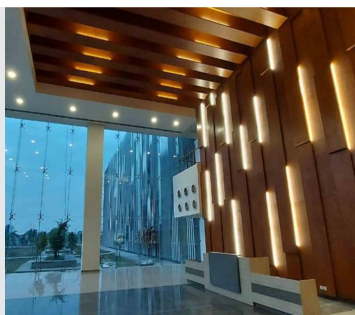
Floors: Ground + 14 & Ground – 3

## City Shopping Mall

Location: NESPAK Society,  
Lahore

Covered Area = 150,000 ft<sup>2</sup>

Floors: Ground + 5



## Punjab Forensic Science Authority

Worth: \$ 11 Million

Location: Thokar Niaz Baig, Lahore

Covered Area = 112,000 ft<sup>2</sup>

Floors: Ground + 3 & Ground – 1

## Sky One Park

Location: Islamabad

Covered Area = 550,000 ft<sup>2</sup>

Floors: Ground + 10 & Ground – 3







## Mother & Child Care Hospital

Location: Mianwali

Covered Area = 537,889 ft<sup>2</sup>

Floors: Lower Ground & Ground  
+3

## SFMKB Institute of Cardiology

Location: Dera ghazi Khan

Covered Area = 240,036 ft<sup>2</sup>

Floors: Basement & Ground +3



## Hazrat Hameed Uddin Hakim Sheikh Zayed Surgical Complex

Location: Rahim Yar Khan

Covered Area = 383,720 ft<sup>2</sup>

Floors: Basement & Ground +3

## Pilot Program for HUB & Spoke Model at Zahir Pir

Location: Rahim Yar Khan

Covered Area = 73,427 ft<sup>2</sup>

Floors: Ground +1



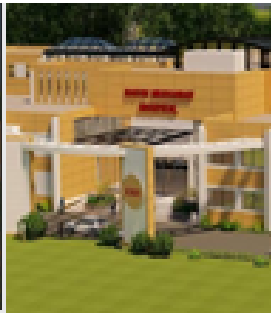
## Emergency & Trauma Centre at Jinnah Hospital

Location: Jinnah Hospital, Lahore

Covered Area = 272,571 ft<sup>2</sup>

Floors: Basement & Ground +5

# Building Projects



## Namal Hospital

Location: Mianwali

Covered Area = 225,000 ft<sup>2</sup>

Floors: G+3

## Fauji Foundation Hospital

Location: Islamabad

Covered Area = 127,500 ft<sup>2</sup>

Floors: Ground + 5 & Ground – 1



## Sewage Treatment Plant

Location: Abqaiq, KSA

## 1000 Bed General Hospital

Location: Lahore

Covered Area = 269,550 ft<sup>2</sup>

Floors: Basement & Ground +5







## Emergency & Trauma Centre at Services Hospital

Location: Lahore

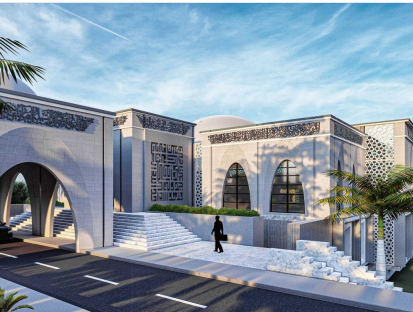
Covered Area = 204,377 ft<sup>2</sup>

Floors: Basement & Ground +7

## University of Child Health Sciences

Location: Lahore

Covered Area = 304,937 ft<sup>2</sup>



## Punjab House

Location: Gawadar

Covered Area = 25,674 ft<sup>2</sup>

Floors: Basement & Ground +2

## South Punjab Civil Secretariat and GOR at Multan

Location: Multan

Covered Area = 180,645 ft<sup>2</sup>

Floors: Ground +3



## 200 Beds Accidents and Emergency Center at PIMS

Location: Islamabad

Covered Area = 245,780 ft<sup>2</sup>

Floors: Basement & Ground +1

# Transportation Structures

## N-70 (Khajuri to Bewata)

Redesign of 4 Prestressed Deck Girder Bridges. Redesign was undertaken to economize the old design. The original design was done for Freysenet Method of prestressing.

Design of 4 Prestressed Deck Girder Bridges. The spans varied from 75 to 100 ft. Some of the bridges were on a curve and at gradient.

## Islamabad – Murree Expressway

## Basha-Diamir Project

Preliminary Design of 220 meters long single span bridge over river Indus. Cable Stayed, Steel Arch, Concrete Arch and Concrete Box Girder designs were considered. Preliminary design was completed using ACI and AASHTO LRFD codes.

# Projects Inhand

## B45, Gulberg Lahore

Location: Gulberg Lahore

Covered Area = 176,000 ft<sup>2</sup>

Floors: Ground + 13 & Ground – 2



## Metropole Arcade & Mall , Rawalpindi

Location: Saddar Cant, Rawalpindi

Covered Area = 1,000,000 ft<sup>2</sup>  
(Approx)

Floors: Ground + 17 & Ground – 2

# Design Review & Audit



## Punjab Agriculture, Food and Drug Authority

Worth \$ 90 million

Covered Area =278,000 ft<sup>2</sup>

Floors: Ground + 7 & Ground – 1

Original Designer: DAR, Saudia Arabia

## Information Technology

### University

Worth \$50 million

Covered Area =500,000 ft<sup>2</sup>

Floors: Ground + 6 & Ground – 1

Original Designer: EA Consultants Karachi



## Allama Iqbal Specialized Hospital, Sialkot

Worth \$40 million

Covered Area =325,000 ft<sup>2</sup>

Floors: Ground + 6 & Ground – 1

Original Designer: Dar, Saudi Arabia

## Orient Tower, Lahore

Covered Area = 1,068,500 ft<sup>2</sup>

Floors: Ground + 42 & Ground – 3

Original Designer: Mushtaq & Bilal





# Design Review & Audit

## Pakistan Kidney and Liver Institute

Worth \$210 million

Covered Area = 1,068,500 ft<sup>2</sup>

Floors: Ground + 14 & Ground – 1

Original Designer: Mushtaq & Bilal



## Pakistan Kidney and Liver Institute

Worth \$210 million

Covered Area = 1,068,500 ft<sup>2</sup>

Floors: Ground + 14 & Ground – 1

Original Designer: Mushtaq & Bilal



## Rajab Tayyeb Erdegon Hospital

Worth \$40 million

Covered Area = 275,000 ft<sup>2</sup>

Floors: Ground + 5 & Ground – 1

Original Designer: Mushtaq & Bilal



## Mother and Child Care Hospital


Location: Murree

Worth \$40 million

Covered Area = 115,000 ft<sup>2</sup>

Floors: Ground + 6 & Ground – 1

Original Designer: NESPAK



Phone:  
+92326 988 9888

Mail:  
[acrow@acrow-engineering.com](mailto:acrow@acrow-engineering.com)

Address:  
240-DD, Phase 4, D.H.A.  
Lahore, Pakistan

# Company Profile 2023



**ACROW** Consulting Engineers PVT. (LTD)